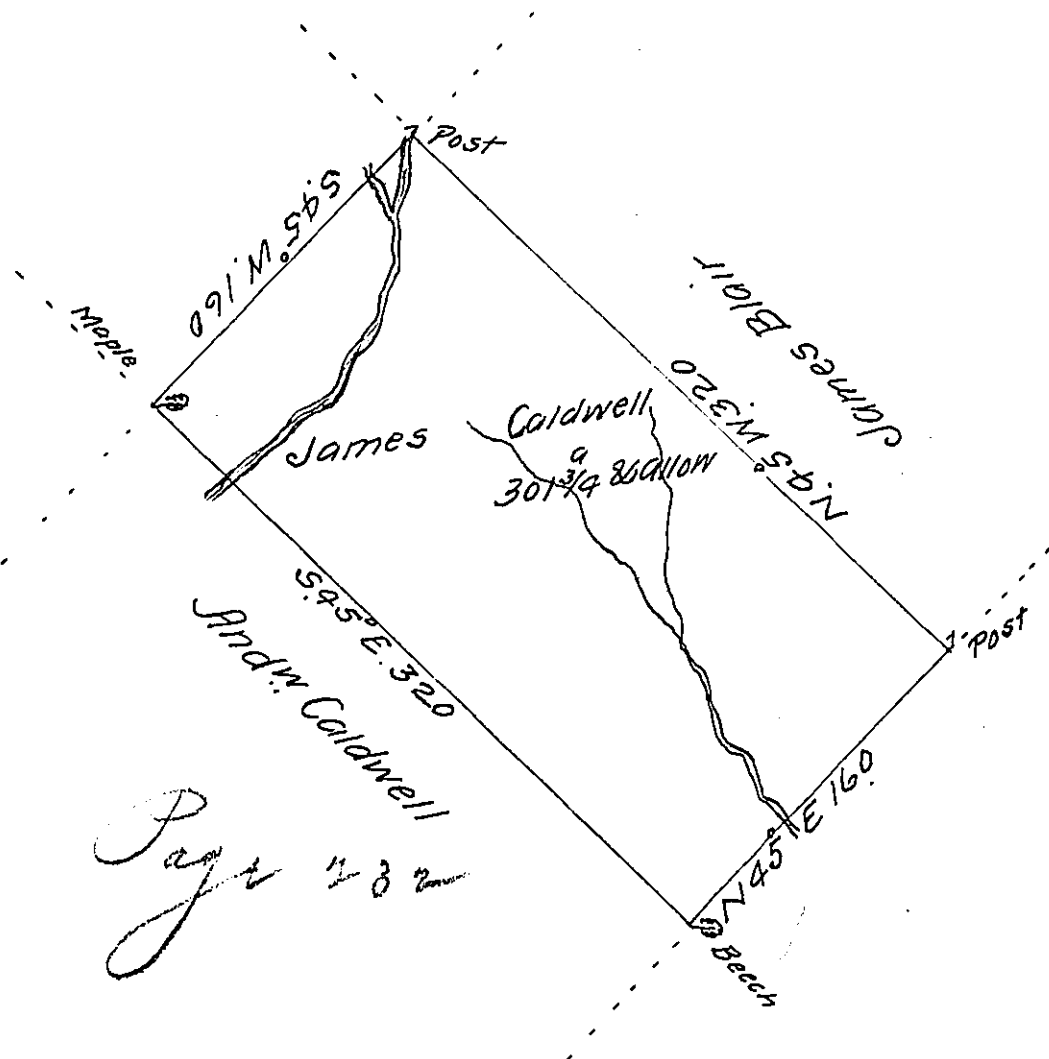


FORM NO. 1.



A Draught of a Tract of Land called _____ situate on -
 the waters of Lahawanack adjoining Land surveyed for Andrew
 Caldwell and others in the County of Northumberland con-
 taining Three hundred and one acres and three quarters of
 an acre besides the usual allowance of six per Cent for Roads & c^o
 Surveyed the 15th day of August 1774 for James Caldwell in
 pursuance of a warrant dated the 12th day of July 1774.
 by Chas. Stewart D^y Sur^r.

To John Lukens Esq^r Survey^r Gen^l.

IN TESTIMONY that the above is a copy of the original remaining on file in
 the Department of Internal Affairs of Pennsylvania, made
 conformably to an Act of Assembly approved the 16th day of
 February, 1833, I have hereunto set my Hand and caused
 the Seal of said Department to be affixed at Harrisburg,
 this Sixth day of June 19/2

Henry Horck.
 Secretary of Internal Affairs.